

## GBD/GTD/GDD Diaphragm Capsule

### Feature

Precision sensing element  
 For low pressure and vacuum gauges  
 Phosphor bronze or SS 316L  
 Standard diameters: 38-114 mm  
 Hermetically sealed construction  
 High sensitivity and repeatability  
 Stable long-term performance

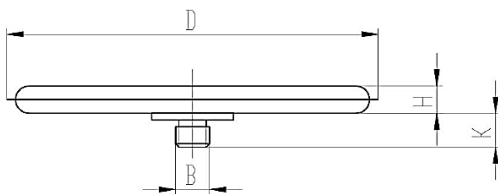


### Introduction

The diaphragm capsule is the core sensing element used in low-pressure and vacuum mechanical pressure gauges. It consists of two precision-formed metallic diaphragms welded together around the perimeter to create a hermetically sealed chamber filled with inert gas or vacuum. Pressure-induced deformation of the capsule is converted into mechanical displacement for accurate pressure indication.

Available in QSn6.5-0.1 phosphor bronze, C17200 beryllium copper and 316L stainless steel, diaphragm capsules are offered in standard diameters ranging from 38 mm to 114 mm to suit various pressure ranges and gauge designs. Manufactured with high dimensional accuracy and consistent elastic characteristics, they provide reliable performance and long service life for OEM pressure gauge manufacturers.

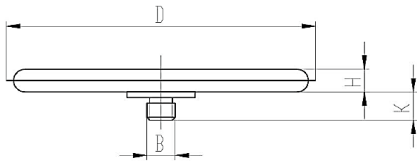
### GTD Diaphragm Capsule



Type	Model	Range (kPa)	B	D (mm)	H (mm)	K (mm)	Material	Precision (%)	Placement (mm)
GTD	48	0-2.5~100	M5	Φ48	3.8	5	316L Stainless Steel	1.0	1.1~1.5
	54.5	0-2.5~100		Φ54.5	3.8	5			
	70	0-1~100		Φ70	5	5			
	75	0-1~2.5		Φ75	4.5	5			
	100	0-1~10		Φ100	5.5	5			
	114	0-0.2~1		Φ114	4.5	5			

Order Example: GTD-70-100kPa-M5

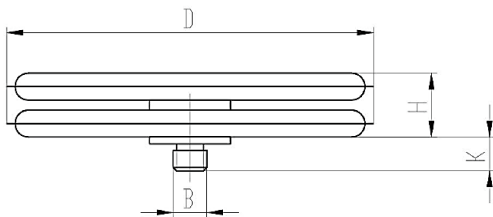
### GBD Diaphragm Capsule



Type	Model	Range (kPa)	B	D (mm)	H (mm)	K (mm)	Material	Precision (%)	Placement (mm)
GBD	38	0-4~100	M5	Φ38	5	5	C17200 Beryllium Copper	1.0	1.1~1.5
	48	0-2.5~100		Φ48	3.8	5	QSn6.5-0.1 Phosphor Bronze		
	54.5	0-2.5~100		Φ54.5	3.8	5			
	58	0-2.5~100		Φ58	4	5			
	70	0-1~100		Φ70	5	5			
	75	0-1~2.5		Φ75	4.5	5			
	100	0-1~10		Φ100	5.5	5			
	114	0-0.2~1		Φ114	4.5	5			

Order Example: GBD-54.5-10kPa-M5

### GTD Diaphragm Capsule Set



Type	Model	Range (kPa)	B	D (mm)	H (mm)	K (mm)	Material	Precision (%)	Placement (mm)
GDD	38	0-4~100	M5	Φ38	10	5	C17200 Beryllium Copper	1.0	2.2~3.0
	48	0-2.5~100		Φ48	10	5	QSn6.5-0.1 Phosphor Bronze /316L Stainless Stell		
	54.5	0-2.5~100		Φ54.5	10	5			
	58	0-2.5~100		Φ58	10	5			
	70	0-1~100		Φ70	12	5			
	75	0-1~2.5		Φ75	10	5			
	100	0-1~10		Φ100	13	5			
	114	0-0.2~1		Φ114	11	5			

Order Example: GDD-100-10kPa-M5